



SIMULTANEOUS ESTIMATION OF AMLODIPINE BESYLATE AND PERINDOPRIL ERBUMINE IN COMBINED DOSAGE FORM BY RP-HPLC

Tribhuvan Singh^{1*}, Jogu Chandrudu¹, J. Dinesh Babu¹, Mihir Y. Parmar² and Chidirala Suresh³

¹Scient Institute of Pharmacy, Ibrahimpatnam, Jawaharlal Nehru Technological University, Hyderabad, Telangana, India.

²Bharat Institute of Technology, Mangalpally, Jawaharlal Nehru Technological University, Hyderabad, Telangana, India.

³Sri Indu Engineering Technology, Sheriguda, Jawaharlal Nehru Technological University, Hyderabad, Telangana, India.

Article Received on
17 December 2018,

Revised on 07 Jan. 2018,
Accepted on 28 Jan. 2018

DOI: 10.20959/wjpps20192-13157

*Corresponding Author

Tribhuvan Singh

Scient Institute of
Pharmacy, Ibrahimpatnam,
Jawaharlal Nehru
Technological University,
Hyderabad, Telangana,
India.

ABSTRACT

The present work was developed and validated an analytical method for quantitative determination of Perindopril Erbumine and Amlodipine Besylate in a tablet formulation. Chromatographic separation of the two drugs was achieved on an Eclipse XDB C-8 (150 mm X 4.6 mm), 5mm. The mobile phase constituted of Buffer: Acetonitrile (65:35) and pH adjusted to 2.6 with dilute Ortho-Phosphoric Acid was delivered at the flow rate 1.0 mL/min. Detection was performed at 210 nm. Separation was completed within 8 min. The retention time for Perindopril Erbumine and Amlodipine Besylate 3.168 & 5.504 min respectively. Calibration curves were linear with correlation coefficient between 0.99 to 1.0 over a concentration range of 8 to 60 mg/mL of Perindopril Erbumine and 10 to 75 mg/mL of

Amlodipine Besylate. The relative standard deviation (RSD) was found < 2.0%.

KEYWORDS: Perindopril Erbumine; Amlodipine Besylate; Reversed-phase HPLC.

INTRODUCTION

Perindopril Erbumine and Amlodipine Besylate are Antihypertensive drugs. Perindopril Erbumine is Angiotensin Converting Enzyme Inhibitor. It is used for the treatment of

hypertension. It may be used alone or in combination with other antihypertensive agents. Amlodipine besylate is the Calcium channel blocker.^[1] It is used as an anti-hypertensive and in the treatment of angina. It lowers the blood pressure, relaxes heart muscles and dilates the heart blood vessels to prevent spasm.

The chemical name for PerindopriErbumine is 2- Methyl Propane-2-amine (2S,3As,7As)-1- [(2S)-2-2[(1S)-1-(ethoxycarbonyl)butyl]amine]propanoyl]octahydro-1H-indol-2-carboxylate.

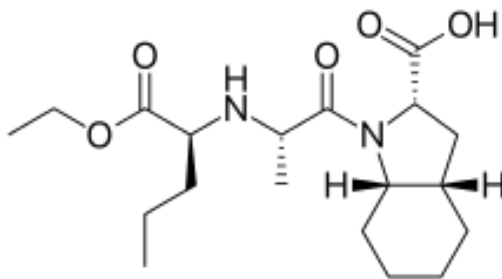


Fig. 1: Perindopril.

The chemical name for Amlodipine besylate is 3-ethyl 5-methyl4RS-2-[(2-aminoethoxy) methyl]-4-(2-chlorophenyl)-6-methyl-1,4-dihydropyridine-3,5-dicarboxylatebenzene sulphonate.^[3]

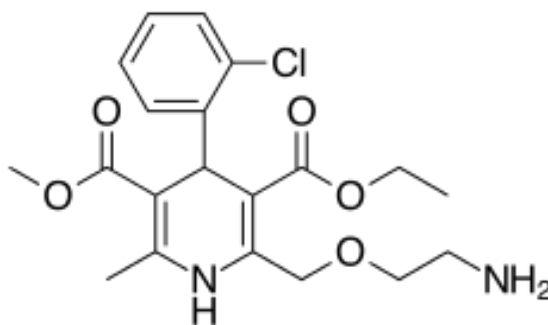


Fig. 2: Amlodipine.

Literature survey revealed that Methods available for the determination of Perindopri Erbumine include [HPLC],^[4] [LCMS],^[5] and [Crystal CE]^[6]. Methods available for the determinations of Amlodipine besylate include [HPLC],^[7,8,9] HPTLC,^[10] simultaneous spectrophotometric determination,^[11,12,13] Spectrofluorometric,^[14] [LCMS]^[15] and stability indicating assay method.^[16] The present work describes a validated reverse phase HPLC method for simultaneous determination of these drugs in tablet dosage form.

However no references have been found for quantitative determination of Perindopril Erbumine and Amlodipine Besylate in pharmaceutical preparations. The major advantage of the proposed method is that Perindopril Erbumine and Amlodipine Besylate can be determined on a single chromatographic system with the same detection wavelength.

MATERIAL AND METHODS

Chemicals and Materials

Cadila Healthcare Limited. supplied Perindopril Erbumine and Vent Unimark remedies supplied Amlodipine Besylate. Acetonitrile and Ortho Phosphoric Acid were supplied by Spectrochem and EMerck Limited.

Instrumentation

Shimadzu 2010C- integrated high performance liquid chromatographic system was used for this experiment. Shimadzu 2010C system equipped with quaternary gradient pump, 2010C UV-VIS detector, 2010C Column Oven and 2010C programmable auto sampler controlled by CLASS-VP software. The Eclipse XDB C8 column (150 X 4.6, 5mm) was used as a stationary phase. HPLC conditions are given Table 1.

Column	Eclipse XDB C8 column (150 X 4.6, 5mm).
Detector	210 nm
Injection volume	20 μ L
Temperature	30° C
Run time	8 min
Flow rate	1.0 mL/min
Mobile phase Buffer	Acetonitrile (65:35)

Buffer Preparation

Weigh 6.8 Pottasium Dihydrogen Phosphate in to 1000 ml of Milli Q water and mix.

Mobile Phase Mixture of Buffer

Acetonitrile in the ratio of (65:35), Adjust pH 2.6 with Ortho Phosphoric Acid.

Diluent Mixture of Buffer

Acetonitrile in the ratio of (65:35), Adjust pH 2.6 with orthophosphoric acid.

Standard Preparation

Standard stock solutions of 400 μ g.mL⁻¹ and 700 μ g.mL⁻¹ were prepared by dissolving 40 mg PerindoprilErbumine and 70 mg Amlodipine Besylate in 100 ml diluent respectively.

From this stock solution, working standard solution having concentration 40 $\mu\text{g}\cdot\text{mL}^{-1}$ and 70 $\mu\text{g}\cdot\text{mL}^{-1}$ were prepared by appropriate dilution for Perindopril Erbumine and Amlodipine Besylate respectively.

Sample Preparation

Weigh accurately tablets powdered equivalent to about 40 mg of Perindopril Erbumine and 50 mg of Amlodipine besylate in to 200 mL volumetric flask. Add about 150 mL Mobile phase and sonicate to dissolve. Now make volume up to the mark with Mobile phase. Filtered it through 0.45 μ HVLP nylon filter and made further dilution 5.0 mL of this solution to 25.0 ml with mobile phase and mix.

RESULTS AND DISCUSSION

Method Validation System Suitability and System Precision

System suitability and system precision was daily performed during entire validation of this method. The results of system suitability and system precision were presented below.

System Suitability and System Precision

Compound	Retention time	n	k'	R	T	α
Perindopril Erbumine	3.172 \pm 0.004	2694.43	30.79	--	1.11	--
Amlodipine Besylate	5.504 \pm 0.000	4457.92	54.04	8.10	1.05	1.755

n= Theoretical plates

k'= Capacity Factor

R= Resolution

T= Asymmetry

α = Selectivity

Linearity and Calibration Curve

The plot of peak area response against concentration is shown in fig. The plot is linear over the concentration range of 8 to 60 mg/mL and 10 to 75 mg / mL for Perindopril Erbumine and Amlodipine Besylate respectively. Linearity of the calibration curve was determined by weighed (1/c) least square regression analysis. The correlation coefficient was found to be 0.99 to 1.00. A linear relationship was found for all components. The results of linearity, limit of detection and limit of quantification were presented below.

Characteristics of the Analytical Method derived from the Standard Calibration Curve

Compound	LOD $\mu\text{g}/\text{mL}$	LOQ $\mu\text{g}/\text{mL}$	Linearity range n=(5)	Correlation regression $\mu\text{g}/\text{mL}$	Residual std. σ	Slope of regression S
Perindopril Erbumine	0.4	1.2	8.0 to 60.0	0.99995	4634.801	19311.853
Amlodipine Besylate	0.28	0.84	10.0 to 75.0	0.99994	54560.316	55381.342

LOD= Limit of detection; LOQ= Limit of quantification

Specificity

There was no interference from sample placebo and peak purity of Perindopril Erbumine and Amlodipine Besylate were 0.99999 and 1.00000 respectively. It showed that developed analytical method was specific for the analysis of Perindopril Erbumine and Amlodipine Besylate in tablet dosage form.

Standard and Sample Solution Stability

Standard and sample solution stability was evaluated at room temperature for 24 h. The relative standard deviation was found below 2.0%. It showed that both standard and sample solution was stable up to 24 h at room temperature.

Method Precision

The precision of the method was established by carrying out the analysis of the analyte (n=6) using the proposed method. The low value of standard deviation showed that the method was precise. The results obtained were presented below.

Compound	Concentration of $\mu\text{g/mL}$ (n=6)	Retention time Mean \pm SEM (n=6)	% Assay Mean \pm SEM (n=6)	% RSD Assay
Perindopril Erbumine	40.4	3.170 \pm 0.0000	98.4 \pm 0.172	0.4
Amlodipine Besylate	70.1	5.498 \pm 0.0000	100.6 \pm 0.107	0.3

Method robustness

Robustness of the method was determined by small deliberate changes in flow rate, mobile phase ratio and column oven temperature. The content of the drug was not adversely affected by these changes as evident from the low value of relative standard deviation indicating that the method was robust. The results of robustness were presented below.

Method Ruggedness

Ruggedness test was determined between two different analysts, instruments and columns. The value of percentage RSD was below 2.0%, showed ruggedness of developed analytical method. The results of ruggedness were presented below.

Method Accuracy table

Method Ruggedness table

Level	Drug Added (mg)	Drug recovered (mg)	% Assay (Mean \pm SEM) (n=3)	% RSD of Assay (n=3)
For Perindopril Erbumine				
50%	20.36	20.60	101.7 \pm 0.61	1.0
100%	40.53	40.26	99.8 \pm 0.43	0.8
150%	60.37	59.89	99.7 \pm 0.20	0.3
For Amlodipine Besylate				
50%	25.46	18.59	101.4 \pm 0.954	1.6
100%	50.27	36.46	100.7 \pm 0.241	0.4
150%	75.23	54.28	100.1 \pm 0.261	0.4

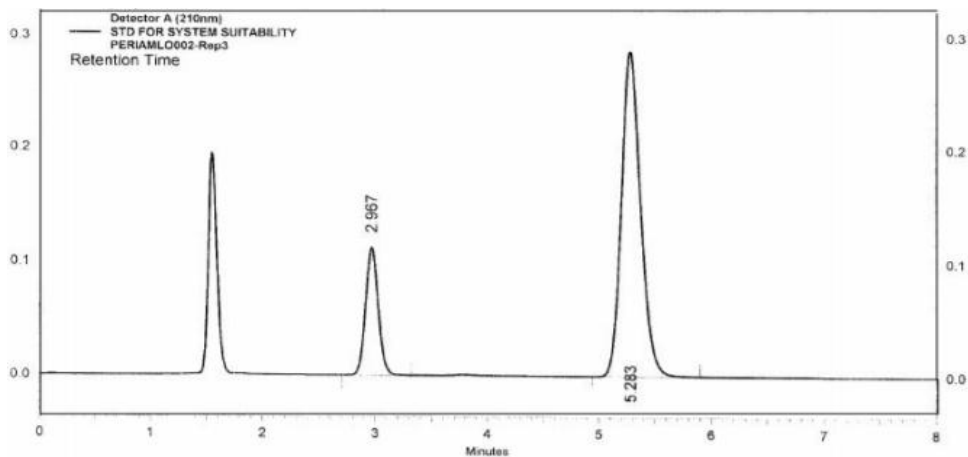
Method Ruggedness table

Compound	% Assay Mean \pm SEM (n=6)	% RSD of Assay (n=6)
Day 1 Analyst-1, Instrument-1 & Column-1		
Perindopril Erbumine	98.4 \pm 0.17	0.4
Amlodipine Besylate	100.6 \pm 0.11	0.3
Day 2 Analyst-2, Instrument-2 & Column-2		
Perindopril Erbumine	99.0 \pm 0.34	0.8
Amlodipine Besylate	100.0 \pm 0.11	0.3

Method Robustness table

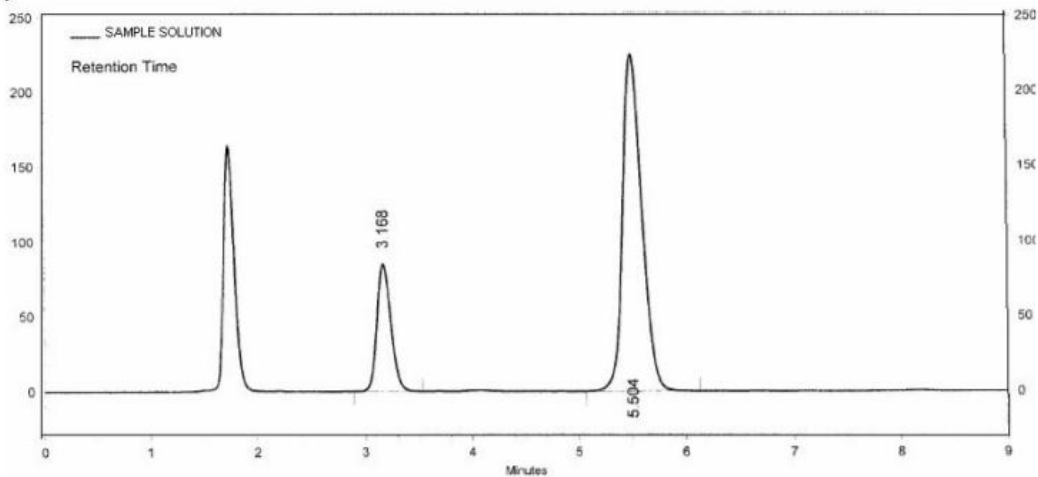
Compound	% RSD in Normal and Changed condition (n=5)			
Temperature	% RSD Normal	% RSD (-5°C)	% RSD (+5°C)	
	Perindopril Erbumine	0.07	0.12	0.06
	Amlodipine Besylate	0.04	0.06	0.05
pH	% RSD Normal	% RSD (-0.2 unit)	% RSD (+0.2 unit)	
	Perindopril Erbumine	0.07	1.04	0.06
	Amlodipine Besylate	0.04	0.11	0.03
Flow Rate	% RSD Normal	% RSD (-10%)	% RSD (+10%)	
	Perindopril Erbumine	0.07	0.03	0.37
	Amlodipine Besylate	0.04	0.45	0.10
Mobile phase ratio	% RSD Normal	% RSD (-2%)	% RSD (+2%)	
	Perindopril Erbumine	0.07	0.1	0.08
	Amlodipine Besylate	0.04	0.2	0.15

Chromatogram of Standard Solution



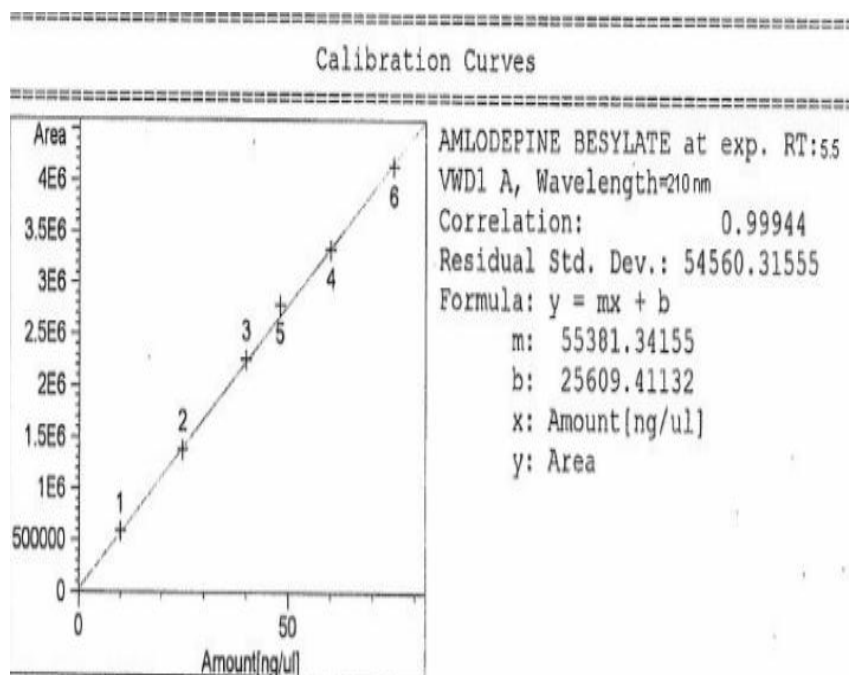
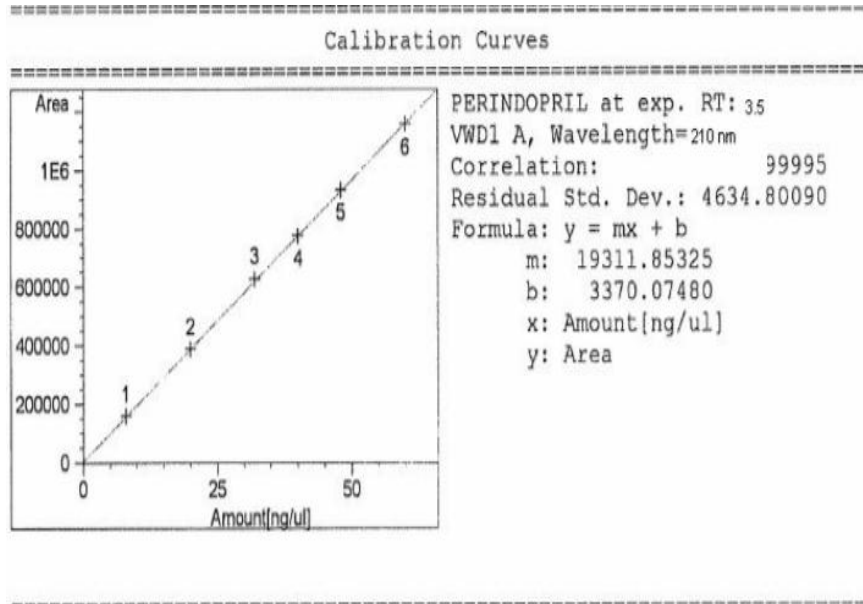
Detector A (210nm) Pk #	Name	Retention Time	Area	Asymmetry	Resolution	Theoretical plates
1	PERINDOPRILE ERBUMATE	2.97	879422	1.11	0.00	3074.91
2	AMLODEPINE BESYLATE	5.28	3400431	1.16	8.72	4434.80
Totals			4279853			

Chromatogram of sample solution



1: 210 nm, 8 nm

Pk #	Name	Retention Time	Area	Theoretical plates	Asymmetry
1	PERINDOPRIL ERBUMINE	3.168	760496	2700.41	1.20
2	AMLODIPINE BESILATE	5.504	2770314	4522.17	1.14
Totals			3530810		

Calibration curve of Amlodipine Besylate**Calibration Curve of Perindopril Erbumine**

The detection wavelength of 210 nm was chosen in order to achieve a good sensitivity for quantitative determination of Perindopril Erbumine and Amlodipine Besylate in tablet dosage form. The mobile phase consisting of Buffer : Acetonitrile (65:35) with (pH 2.6) with Ortho Phosphoric Acid offered a good separation at ambient temperature under these conditions using a flow rate of 1.0 mL/min and a runtime of 8 min, Perindopril Erbumine elutes at first

and then Amlodipine Besylate shown in the chromatogram, In chromatogram first peak(at RT 1.5 min) due to Besylate Salt of Amlodipine is detected due to lower common wavelength selected, which illustrate the separation of both active ingredients in this system. The isocratic program throughout HPLC method was adopted to analyze both components in a single run. The proposed method is simple and do not involve laborious time consuming sample preparation.

CONCLUSION

A simple and elective LC method is described for the determination of Amlodipine and Perindopril in tablet dosage forms. Chromatographic separation was achieved on a C-18 column using mobile phase consisting of a mixture of 80 volumes of methanol and 20 volumes of water with detection of 240 nm. Linearity was observed in the range 6-14 µg /ml for Amlodipine($r^2 = 0.998$) and 6-14 µg /ml for Perindopril($r^2 = 0.996$) for the amount of drug estimated by the proposed methods was in good agreement with the label claim. The proposed methods were validated. The accuracy of the methods was assessed by recovery studies at three different levels. Recovery experiments show that there is complete absence in the interference from commonly encountered pharmaceutical additives. The method was found to be precise as indicated by the repeatability analysis, showing % RSD less than 2. All statistical data proves validity of the methods and can be used for routine analysis of pharmaceutical dosage form.

ACKNOWLEDGEMENTS

I, Dr. Tribhuvan Singh thankful to management of Scient Institute of Pharmacy, Ibrahimpatnam, Hyderabad for providing necessary facilities to carry out the research work.

REFERENCES

1. "Medical Definition of AMLODIPINE". *www.merriam-webster.com*. Retrieved 5 July, 2017.
2. K. D. Tripathi's, Essentials of medical Pharmacology, 5th Edition, Jaypee Brothers Medical Publishers, 2003; 488: 496- 497.
3. O'Neil M.J., Edn The Merck Index-An Encyclopedia of Chemicals, Drug and biologicals, 14th Edn, Merck, 2006: 6836.
4. British Pharmacopoeia, The department of Health, London, 2008; 1: 137.
5. "Amlodipine Besylate". *Drugs.com*. American Society of Hospital Pharmacists. Retrieved 22 July, 2016.

6. *The ESC Textbook of Preventive Cardiology: Clinical Practice*. Oxford University Press, 2015; 261.
7. Chorghade, Mukund S. *Drug Discovery and Development*. 1. Hoboken: John Wiley & Sons, 2006; 207.
8. "WHO Model List of Essential Medicines. World Health Organization. April 2015. Retrieved 8 December, 2016.
9. "Amlodipine". *International Drug Price Indicator Guide*. Retrieved 23 July, 2016.
10. Hamilton, Richart *Tarascon Pocket Pharmacopoeia (Deluxe Lab-Coat ed.)*. Jones & Bartlett Learning, 2015; 154.
11. Wang, JG, *combined role of calcium channel blockers and angiotensin receptor blockers in stroke prevention*". *Vascular health and risk management*, 2009; 5: 593–605.
12. "Norvasc Prescribing Information" (PDF). Retrieved 2017.
13. Delgado-Montero, Antonia; Zamorano, Jose L. *Atorvastatin calcium plus amlodipine for the treatment of hypertension*". *Expert Opinion on Pharmacotherapy*. 2012: 2673–2685.
14. Royal Australian College of General Practitioners. "Consumer Medicine Information, GenRx Perindopril" (PDF). *Clinical Resources, Medicine information for health professionals*.
15. Australian Government Department of Health and Ageing "PBS for Health Professionals". *Pharmaceutical Benefits Scheme*. Retrieved, 2008: 09-14.
16. PROGRESS Collaborative Group. "Randomised trial of a perindopril-based blood-pressure-lowering regimen among 6,105 individuals with previous stroke or transient ischaemic attack". *The Lancet*, 2001; 358: 1033–1041.
17. Charlotte Harding (200 *what you need to know about the new wonder drug cocktail for high blood pressure* JADN Repository. Retrieved, 2007: 07-11.
18. Linda Brookes "ASCOT: Anglo-Scandinavian Cardiac Outcomes Trial -- Results From The Lipid-Lowering Arm". *Medscape Today*. Retrieved, 2007: 07-11.
19. Bahl VK, Jadhav UM, Thacker HP. Management of Hypertension with the Fixed Combination of Perindopril and Amlodipine in Daily Clinical Practice: Results from the STRONG Prospective, Observational, Multicenter Study. *American Journal of Cardiovascular Drugs* May 22, 2009; 9(3): 135-142.
20. Singh T, Dhiraj Kumar, Anurag M, Sandeep A, Kishore Kumar DVK. Development of RP-HPLC Method for simultaneous estimation of Cefadroxil and Ambroxol in pure and Pharmaceutical Dosage form. *British Journal of Pharmaceutical Research*. April 19, 2017; 15(6): 1-7.